



Airmail Setup Instructions

www.airmail2000.com

v.1

Airmail is a messaging/email program (similar to Outlook) specifically designed for connection to a radio mailbox station

Winlink is the platform by which Airmail connects between radio communications and the internet.

Program Download

www.airmail2000.com
www.winlink.org

1.



Prepared for Stanislaus County ARES by KG6JXZ & WB6AGR



Setup Information

Go to TOOLS>SETUP WIZARD

INPUT YOUR:

Call Sign

2.

Lat/Lon

Modem/Comport/Baud

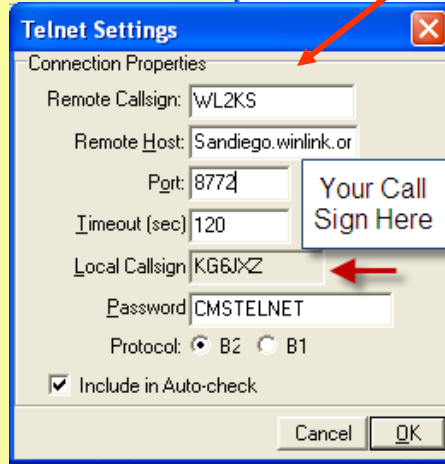
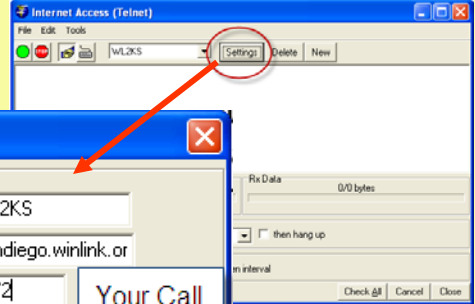
Radio No/Type

Comport/Baud

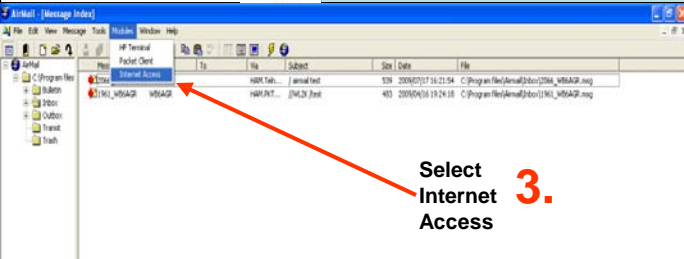
Finish

Internet Access Setup (Telnet)

5. →



6. ←

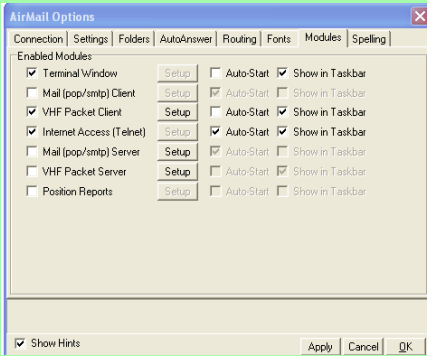


Select Internet Access 3.

Module Setup

TOOLS>OPTIONS>MODULES

4.



ARRL ARES®/NTS/NTSD/Winlink 2000
The national association for AMATEUR RADIO

WHAT IS THE WINLINK 2000 RADIO - EMAIL NETWORK?

* WINLINK 2000 IS A GLOBAL RADIO NETWORK CONSISTING OF MULTIPLE MESSAGE SERVER MAILBOX FACILITIES (PMBOs) INTERCONNECTED BY REDUNDANT CENTRAL MESSAGE SERVERS (CMS).

* Winlink 2000 is used around the world by RV'ers and vessels at sea to send and receive email and to access bulletins and other system information such as weather and tracking. The system has been operating over 5 years.

w3yva aug 05

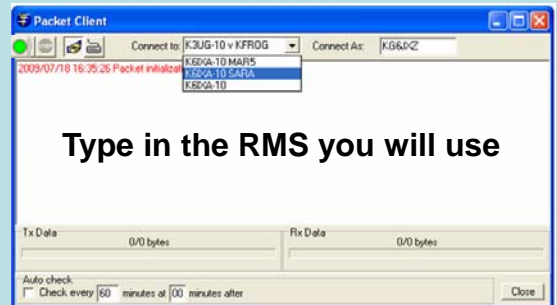
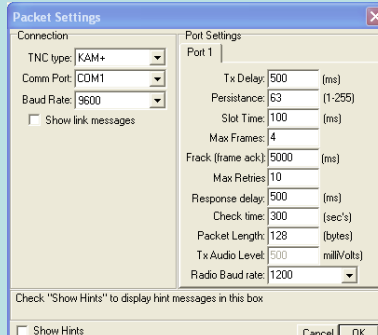
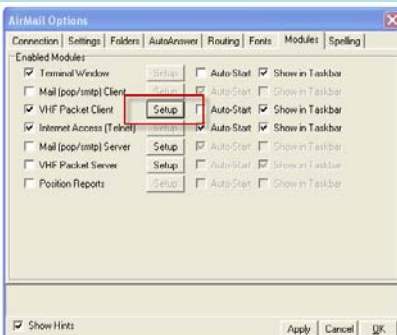
Packet Client Module Setup (Telpac)

Must Have a TNC

1. TOOLS>OPTIONS
Modules Tab
Click Setup

2. Left Side, Your Settings
Right Side, Default Settings

3. Set up the RMS
Remote Message Server



Type in the RMS you will use



Airmail User Instructions

VHF Only, Does not Include HF Instructions

Sending Email with Airmail



Select Start a new message to begin

Type in the address your are emailing, or use your address book, if sending to another Winlink member you may simply enter the call sign.

Type in your subject, preface it with //WL2K / to eliminate spam (See Diagram 2.1)

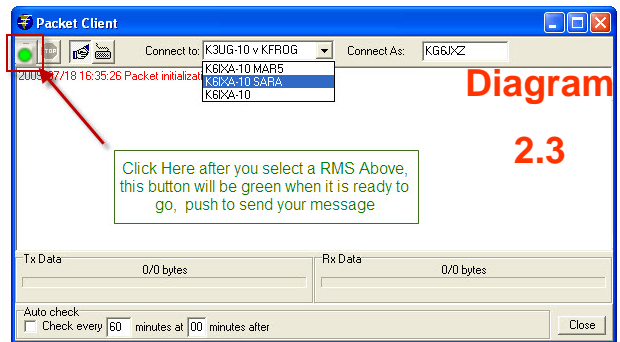
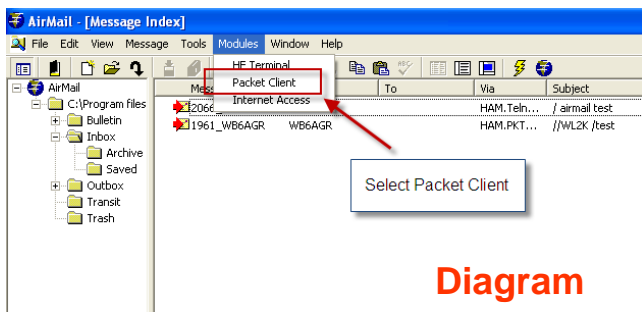
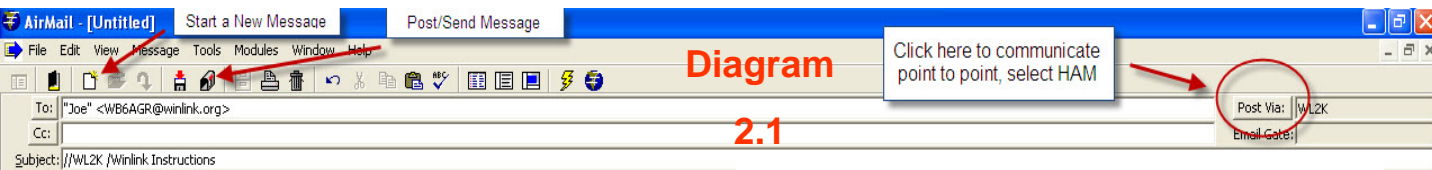
Press the mail box icon on top, to post the message, (Puts it in the queue to send)

Select your Packet Client (See Diagram 2.2)

Select RMS Station (See Diagram 2.3)

Click Green Button to send (See Diagram 2.3)

To check your message, Open outbox and look for your message, after the message has been sent, it will show a green check mark



Airmail General Info:

Adding Attachments – Begin a new message, Click FILE>ATTACH FILE, add to your attachment in the typical fashion

Connecting Direct (Point to Point) – Click on POST VIA in the new message and select HAM.

SPAM Relief – Place //WL2K / at the start of the subject line to eliminate Spam.

Common Message Server (CMS) – Internet based communication hub

Radio Message Server – Remote based (Radio) hub, that eventually ties to the CMS to communicate

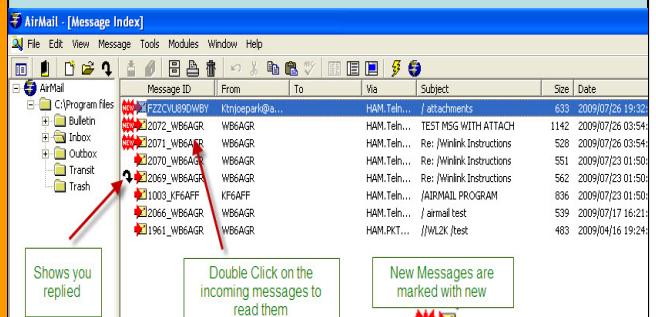


Worldwide CMS Sites:

- WL2KS SanDiego.winlink.org (San Diego)
- WL2KH Halifax.winlink.org (Halifax)
- WL2KP Perth.winlink.org (Perth)
- WL2KW Washington.winlink.org (Washington)
- WL2KV Wien.winlink.org (Wien [Vienna])



Reading Your Messages



HF (Factor)

Airmail has an excellent HF Factor mode. HF Requires some different direction and equipment. The HF section has it's own training materials. The versatility of HF has many applications set up and use of HF are detailed in the HF setup and usage materials.