

Amateur Radio Slow Scan TV

- The best way to understand slow scan TV is to imagine it as color fax pictures but sent over the radio rather than the phone. The pictures are transmitted via tones (1200-2300 HRZ) over the air.





- There are several simple ways to get setup for slow scan TV, the simplest of which use your computer and software with a hardware interface.
- The quality of the pictures is somewhat dependent upon the computer, (monitor & graphics card), and somewhat on the software, hardware.

SSTV

- The better systems support Hi color which gives typical picture resolutions of 320 x 240 in 32 thousand colors.
- These pictures are almost photographic quality and are very impressive to say the least.
- Once you've tried it your hooked.
- Imagine being able to swap mug shots with other Amateurs.
- See who you're talking to.
- Send diagrams and schematics over the air.

Can SSTV be used for EMCOMM

- Yes, It can be used for EMCOMM, for the reason that it will help identify disaster photo's to Incident Commander Station.
- It will help in rescue members on unidentified hazards materials that can cost human lives at risk, by using photos sent via SSTV.



Listen to HF / VHF / UHF

- Listen to HF on 14.230 and 14.233 almost anytime to hear the action.
- Or,listen to VHF / UHF – FM or SSB simplex and repeaters in areas that use SSTV.
- Don't be afraid to break in for info.
- The SSTV hams are usually very willing to help other interested parties or help you get started in slow scan.
- Go for it and I'll see you on the air.

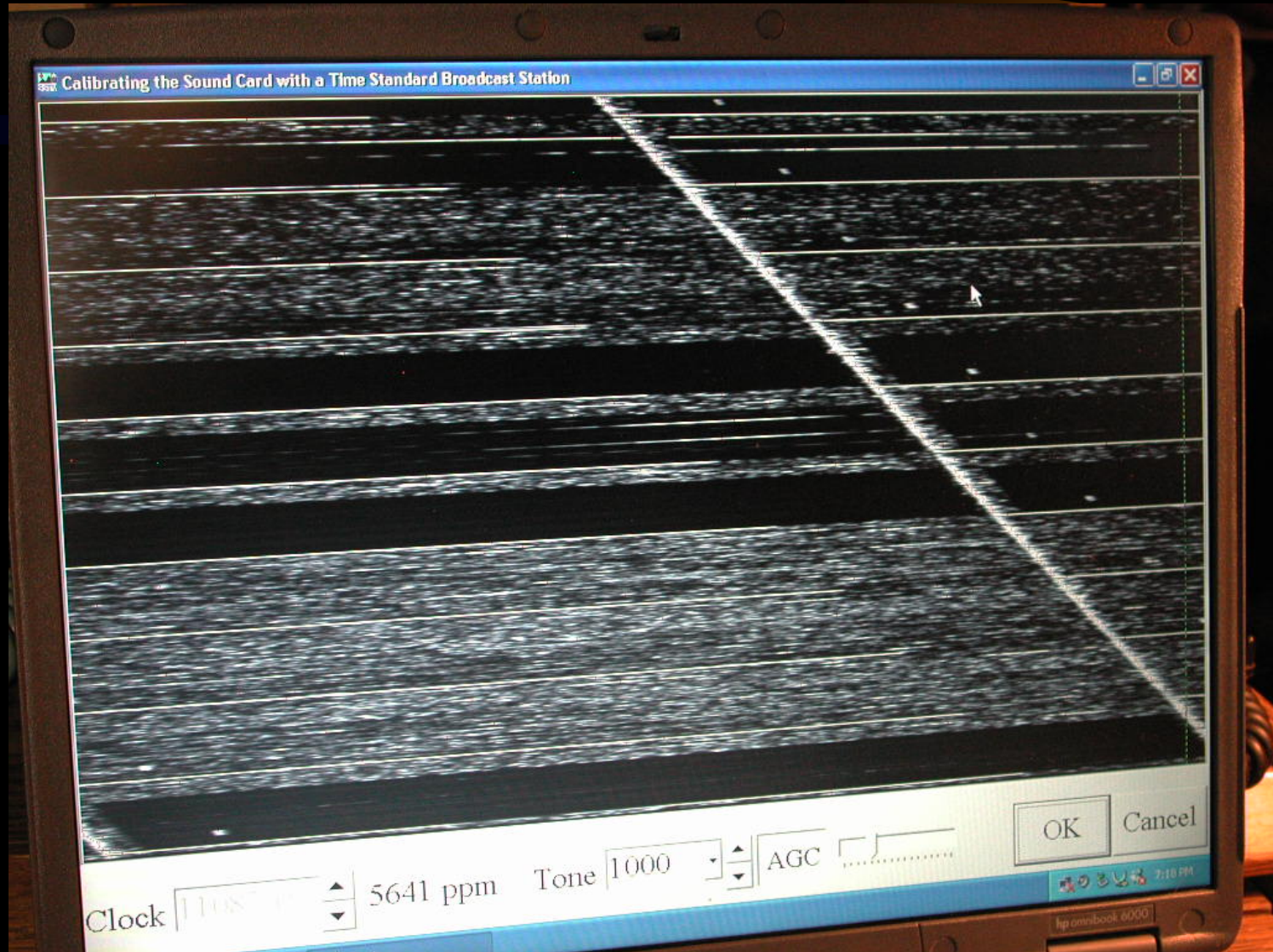
Frequencies on HF.....

- Band Frequency Sideband
- 80 meters 3845 kHz (3730 in Europe) LSB
- 40 meters 7170 kHz (7043 in Europe) LSB
- 20 meters 14230 kHz USB
- 15 meters 21340 kHz USB
- 10 meters 28680 kHz USB

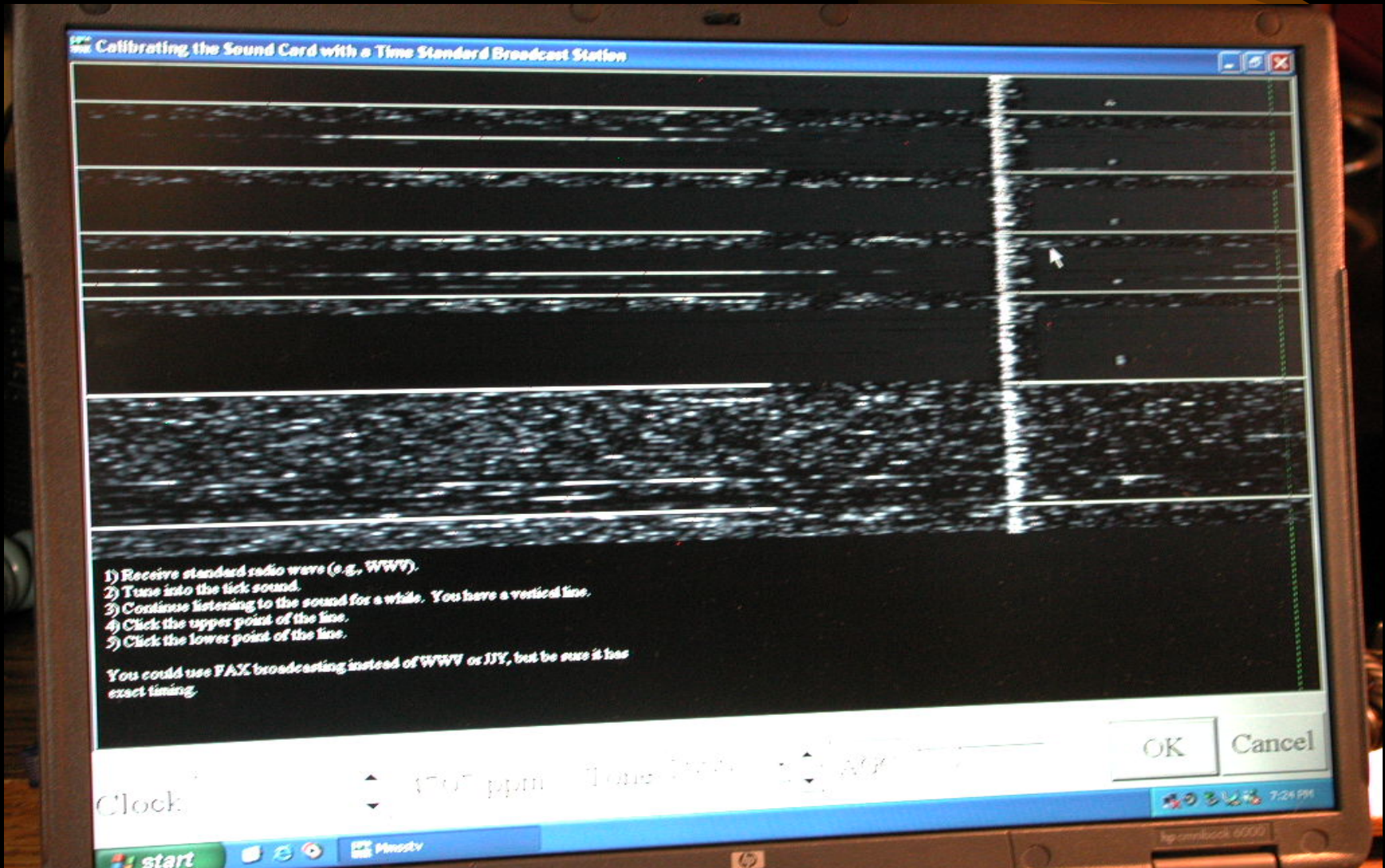
SSTV in 3 Easy Steps.....

- **1. Download and install SSTV software in a Win 95 , 98, XP and Vista Desktop or Laptop Computer. MMSSTV is freeware that that lets you see what you have been missing at no cost!**
- **2. Connect receiver audio out to Soundcard input. Tune in an WWV station on 5mhz,10mhz.,and 15mhz. MMSSTV auto corrects but some programs require adjusting the timing to correct slant.**
- **3. Hold transmitter microphone up to Soundcard speaker and transmit SSTV.**

Slanting adjustments.....

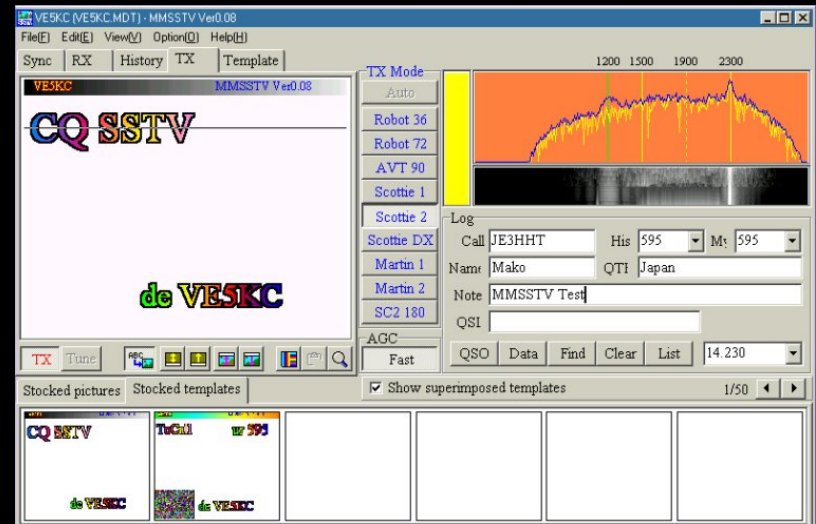


Corrections after tuning.....



Programs

- Programs are free for the taking from many web sites, but would prefer those should use what the other stations are using.
- Use search engines like: Google and Yahoo to find programs or ask your friends on what programs of version that your using.



SSTV

VE5KC (VE5KC.MDT) · MMSSTV Ver0.08

File(F) Edit(E) View(V) Option(O) Help(H)

Sync | RX | History | TX | Template

VE5KC MMSSTV Ver0.08

CQ SSTV

de VE5KC

TX Mode

Auto

Robot 36

Robot 72

AVT 90

Scottie 1

Scottie 2

Scottie DX

Martin 1

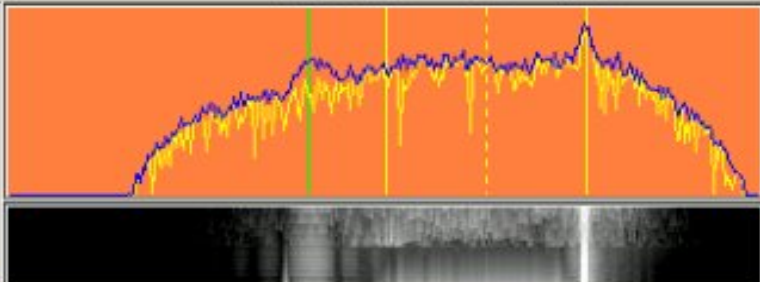
Martin 2

SC2 180

AGC

Fast

1200 1500 1900 2300



Log

Call JE3HHT His 595 M: 595

Name Mako QTI Japan


Note MMSSTV Test

QSI

QSO Data Find Clear List 14.230

Stocked pictures | Stocked templates

Show superimposed templates 1/50





Digital anyone ?