

Packet Radio

V1.0

Information & Instructions

It's important to note that the assumptions made in this document are that all users are using the Kantronics brand TNC's. KPC3, KPC3+, 9612, KAM XL. The instructions will refer to the basic Kantronics operation as it relates to VHF & UHF frequencies. Assuming that the user is also using Winpack 6.8.

Basic Packet Operations

Connect directly to another station: cmd mode (ctrl C)

C **YOUR CALL** Enter

Connect to another station via another station:

C **STATION YOU'RE CALLING** V MAR5

Meaning you are connecting directly to a STATION through the MAR5 node.

Connect to another station via 1 or 2 other nodes:

C MAR5 Enter wait for response from MAR5

C FROG Enter

C **STATION YOU'RE CALLING** Enter

***Unproto Mode: (Ctrl C first to enter Cmd Mode)**

U **YOUR NAME** Enter or K Enter

K Enter

*This places you in Unproto converse mode *Make sure Monitor is ON*

**Remember in Unproto mode with MONITOR ON, everyone will see your traffic and vice versa.*

Working with nodes: (Unproto)

Nodes like SARA & MAR5 are direct connect nodes

K-Nodes can be linked in a series of nodes, such as:

U **YOUR NAME** V KTUO,KBERR,KSUG Enter

K Enter

Connect to another stations Mail Box:

In cmd: mode, C **STATION YOU'RE CALLING-1**

S **YOUR CALL**

subj: _____

msg: _____

End with /ex on a separate line



TNC Quick Commands

C-Connect

MH-Displays list of stns heard

V - Via

K - Converse Mode

H - Help

U- Unproto Mode

D - Disconnect

MYCALL - Displays call sign in TNC

MCON - Allows monitoring while connected

? Followed by a command gives definition

Ctrl C - Returns you to the command mode

MON On - Turns Monitor on

MON Off - Turns Monitor off

Port 2, Port 1- switches the port (9612)



Stanislaus County ARES Packet Radio

CON CTS DSR DCD

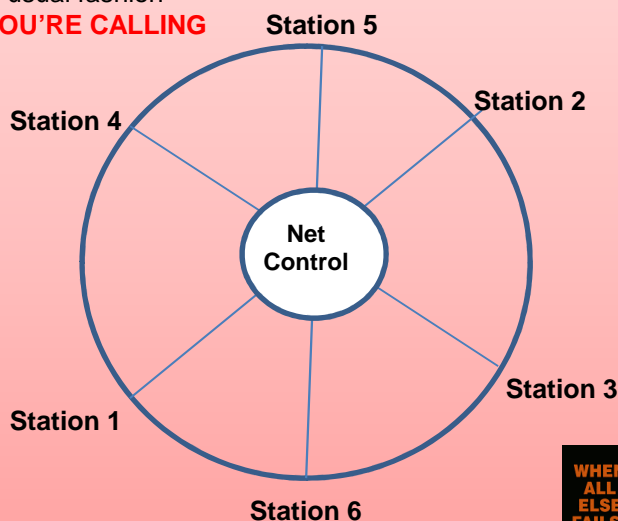
Direct Connect to Multiple Stations:

This is an efficient Emcomm solution whereby net control can connect individually with multiple stations. Net Control and the station they are connected to are the only ones that will see their traffic, no other connected stations will be able to see another's traffic. This works like spokes on a wheel.

Connect in the usual fashion

C **STATION YOU'RE CALLING**

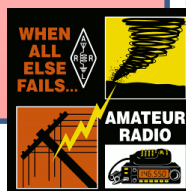
Enter



Packet Nodes

Accessible from the San Joaquin Valley area

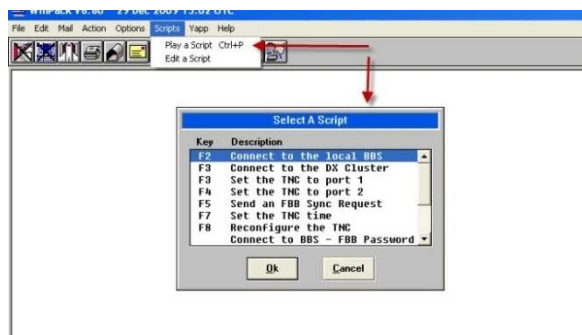
144.910	145.050
SARA	KTUO
MAR5	KBERR
KFROG	WOODY
438.960	KLIVE
SARA	KRDG
WD6EJF-3	KCORN
	KSUG



Working with Scripts

Scripts are set up ahead of time, Scripts are using to easily make programming changes to your TNC using a Hot Key. Click on SCRIPTS to see a list of scripts available, Click PLAY A SCRIPT or use the associated HOT KEY to play the script.

Scripts are located on the ARES web site simply download them into your scripts folder under Winpack.



Recommend you always run the F8 Script after cycling the TNC

Packet Info

It is of the utmost importance that during an Emcomm exercise or event, that you never transmit packet data unless directed to do so by Net Control.

What do all those letters mean?

- B - Bye
 - C - Connect
 - J - Jheard = All stations heard by the TNC
 - N - NDHeard = All Nodes heard by the TNC
 - X - Xconnect, can connect to the 440/9600 node from 2 meters.
- X connect CALL SIGN YOUR ARE CALLING
This will crossband from 2 Meters to 440.

BBS Commands

- K - Kill (BBS Related)
- L - List (BBS Related)
- R - Read (BBS Related)
- S - Send (BBS Related)

Produced by
KG6JXZ & WB6AGR
for
Stanislaus County ARES

Packet Info:
www.varmintal.com/ahamp.htm