

WinPack

Probably the Best Packet Software available

CON CTS DSR DCD

Downloading & Installation

www.gb7fcr.plus.com



Directly under the software logo, is the link for the full version download

Scroll down to about the middle of the page and find the link below, please register your copy, it suggests you should donate money, you are not required to, your call.

Registration requests should be made at..

<http://www.apritch.myby.co.uk/uiv32.htm>

Go to on the above link

Then click on the British flag picture below



Once you receive your code, go into Winpack, click on HELP, then Register Winpack and fill out your info

About UI-View32/Winpack Author

Roger Barker G4JDE - Author of Winpack, UI-View and UI-View32 died of cancer on 8 September 2004.

Before Roger died, it was stated that both he (Roger) and Dee would like any new user of UI-View32 to contribute, on an entirely voluntary basis, to their national Cancer Research organization.

Registering Winpack - BBS

To obtain a registration code (may take a few hours to be processed):

1. Read the section "About UI-View32/Winpack Author" at the top of this page.
2. If you do not hold a valid Amateur Radio License do not bother to apply.
3. Fill in your details in the form below and then click on Register Winpack
4. Wait a few hours...
5. Fill in your details in the form below and then click on Previously Registered

Call sign

First & Last Name

Submit

Fill out your:
Call Sign
First & Last Name
Then Click Register

Return to this website 36 hours later to pick up your registration code



1. Now that you are all registered, it is time to go after and install your scripts

Scripts

These are preset files there are two of them, 1 for syncing your computer clock and one for all TNC settings, follow the link to the files and directions. You will need to customize the TNC script with your Call Sign etc.

http://www.kf6fir.net/ares/WinPack/winpack_scripts.htm

Select the F8 key to run the script



2. Go to OPTIONS > COMMS SETUP

Comms Setup (Press F1 For Help)

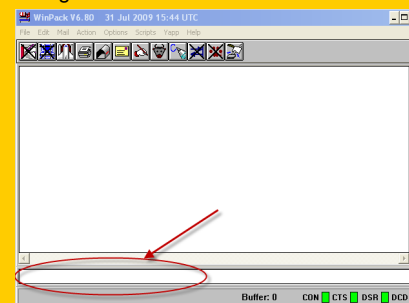
| | |
|---|--|
| Baud Rate <input type="radio"/> 1200 <input type="radio"/> 2400 <input type="radio"/> 4800 <input checked="" type="radio"/> 9600 <input type="radio"/> 19200 <input type="radio"/> 38400 | Connect String *** CONNECTED to |
| Data Bits <input type="radio"/> 7 <input checked="" type="radio"/> 8 | Disconnect String *** DISCONNECTED |
| Parity <input checked="" type="radio"/> None <input type="radio"/> Odd <input type="radio"/> Even | Editor Line Length 74 characters |
| Stop Bits <input checked="" type="radio"/> 1 <input type="radio"/> 2 | Handshaking RTS/CTS |
| Com Port <input checked="" type="radio"/> Com1 <input type="radio"/> Com2 <input type="radio"/> Com3 <input type="radio"/> Com4 | DCD shows con YES |
| <input type="button" value="Ok"/> <input type="button" value="Cancel"/> | Host mode NONE |

3. Hook up your Radio, TNC, & Computer



Once your hardware is hooked up, and communicating with each other, you can make a contact or send a message very simply. Here are a few commands to get you started

Typically Unprotocol mode is used, (Called Unproto), this allows you to send a message via a node and all monitoring can view.



To begin a conversation using conversation mode input into the red area pictured above

U YOURNAME V KNODE

Ex: (U JOE V KOSO)

Then press ENTER

Type CONV or K for conversation mode

Then press ENTER

Type your message

Then press ENTER

If more than one node is used place a comma between them in the command line

More Info:

The Winpack Website has:
User Manuals
Winpack Add ons
Link to Yahoo Group

www.gb7fcr.plus.com



Created for
Stanislaus County ARES
by KG6JXZ

Please wait...



I'm loading WinPack as fast as I can!

WinPack

Probably the Best Packet Software available

Winpack 6.8 Users Guide



The Icons:



Open/Close the Edit Window



Write Message



Turns Capture on /Off



Read Bulletins



Send



Signature



Print



Word Wrap



BBS Session



Pause



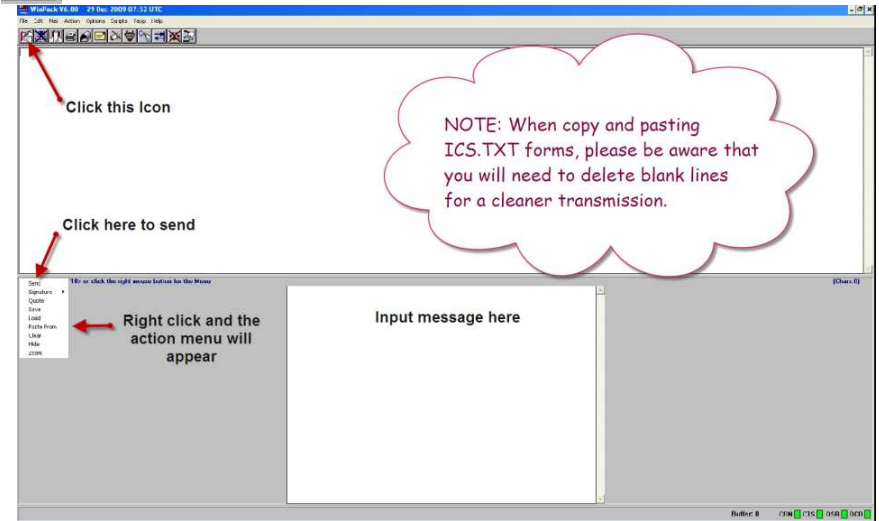
Read Mail



Disconnect



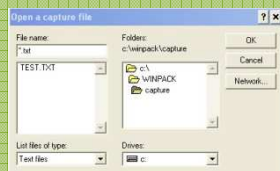
Using Edit Mode is an easy way to copy and paste forms and messages to be sent. Click the Edit Mode icon at the top and the dialog box will open.



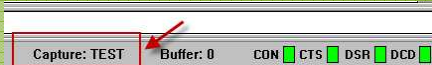
Using Capture Mode



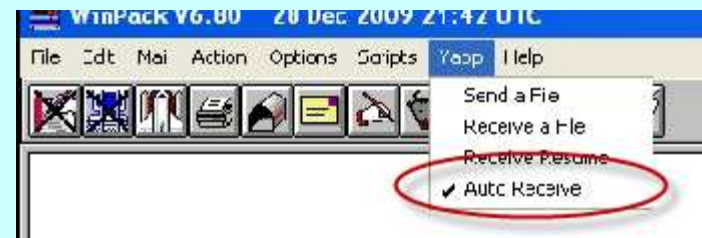
Clicking on the capture mode icon will bring up the dialog box below. Prior to doing so you should make a new text file for the capture to write to. This file should be housed the Capture folder under Winpack.



Simply select the file you created to serve as your capture file for this session, and click OK. You will see Winpack go into Capture mode and show the name of the file it is capturing to, at the bottom of the screen, see below.



Using Yapp mode to send files.



Recommend you set Auto Receive under the Yapp menu.

1. Connect to the station you wish to transfer a file to
2. Click on Yapp, then SEND A FILE
3. Select the file from the dialog box
4. Click OK, your file will begin sending

Remember, The larger the file the longer it will take to send. If the file is too large the process may time out prior to finishing.

CON CTS DSR DCD

The LED's at the bottom right of your screen indicate: